

76mm

100mm

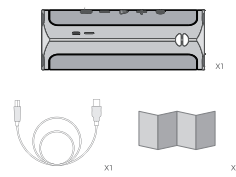


# Fuego™

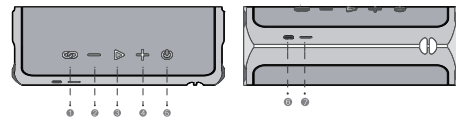
User manual

EN

## Package List

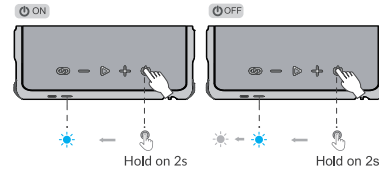


## Diagram



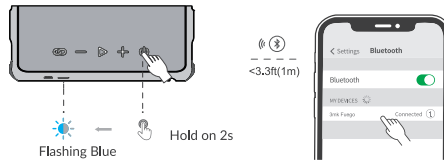
- 1. TWS/ EQ
- 2. Volume-/Previous track
- 3. Pause/Play
- 4. Volume+/Next track
- 5. Power button
- 6. Type-C charging port
- 7. Power/Bluetooth indicator light

## Turning the device on/off



**Turning the device on/off**  
To turn the device on/off, press and hold the power button for 2 seconds. The BT connection will be automatically terminated within 30 minutes after music playback is over. The device will automatically turn off within 10 minutes of no BT connection.

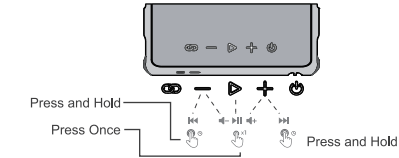
## Bluetooth connection



Flashing Blue  
Blue always ON  
after BT connected

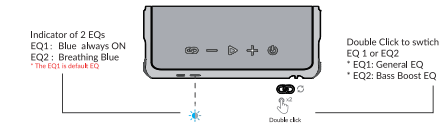
**BT connection**  
Place the speaker at a distance of less than 1 m from the device. Press and hold the power button for 2 seconds. The BT indicator will blink blue while connecting and will glow solid blue when the BT connection is established.

## Play/pause and volume control



**Play / Pause and Volume control**  
To start or stop playback press the Play/Pause button once. To turn up the volume, press the Volume up/Next track button. To turn down the volume, press the Volume down/Previous track button. To switch to the next audio track, press and hold the Volume up/Next track button. To switch to the previous audio track, press and hold the Volume down/Previous track button.

## Dual EQ Equalizer modes

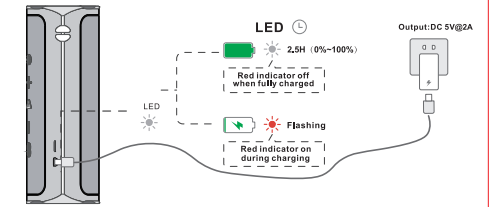


**Indicator of 2 EQs**  
EQ1: Blue always ON  
EQ2: Breathing Blue  
EQ1: General EQ  
EQ2: Bass boost EQ

**Equalizer modes**  
Press the TWS pairing/Switching equalizer modes button twice to switch EQ1 or EQ2:  
EQ1: General equalizer EQ2: Bass boost equalizer

The indicator shows the active equalizer:  
EQ1: Indicator turns solid blue EQ2: Indicator blinks blue (is the default equalizer)

## How to charge

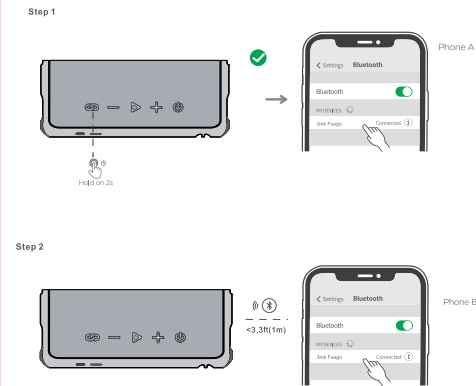


**How to charge**  
1. Insert the Type-C cable into the speaker, and then insert the USB-A connector into a PC or DC charging adapter with a USB-A input to charge, or use a fast charger with a Type-C (not included). While charging, the device indicator is red. The standard charging time is about 3.5 hours.

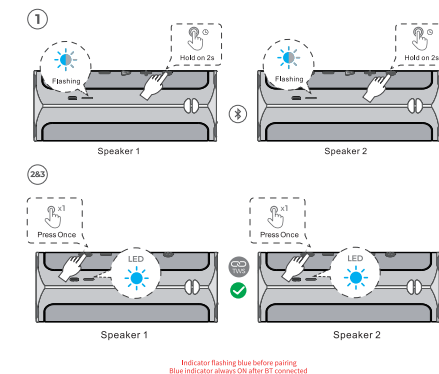
2. The speaker can keep playing music while charging. The red indicator light will turn off as soon as the speaker is fully charged.

When using the battery for the first time, it is required to make its initial calibration: start using it without preliminary charging until it is completely discharged. After that, fully charge the battery. To achieve maximum capacity, it is necessary to carry out 3 complete charge-discharge cycles of the battery.

## Switch Between 2 Bluetooth Devices

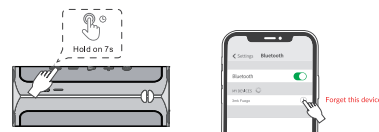


## TWS Connection(Twin Speakers Mode)



**TWS pair to play.**  
To implement a wireless connection between two speakers follow the steps on both devices:  
1. Press and hold the power button on the turned-off speaker for 2 seconds to switch to the BT device search mode (the indicator light will start blinking blue) on 2 devices simultaneously  
2. Press the BT connection button once (only on 1 device) (the light indicator will stop blinking and will turn solid blue, indicating a successful connection)

## Restore factory settings



**Factory reset**  
Press and hold the BT connection button for 7 seconds. You will hear a beeping sound to indicate that the speaker has reset to factory settings.

**Storage**  
The speaker should be stored in a clean, dry and ventilated place with an ambient temperature between +5 and 40 °C. Avoid contact with corrosive substances, keep the product away from fire and heat sources. Charge the device once every six months when not in use.

**Instructions for use:**  
- Product cannot be opened or modified  
- Do not disassemble the device or attempt to service it  
- If the product is in an environment where the temperature exceeds the permissible range, turn off the device and wait until the operating temperature stabilizes within the specified range

**Disposal and recycling information**  
This symbol on the product, battery, attached documents, or packaging means that the products and batteries should be taken to separate waste collection points designed by local authorities at the end of the lifespan. This will ensure that WEEE waste is recycled and treated in a manner that conserves valuable materials and protects human health and the environment.

**Declaration of Conformity (DoC)**  
Hareby 3mk Protection sp. z o.o. declares that this product is in compliance with essential requirements and other relevant provisions of Directive 2014/53/EU.

## Technical Specifications

Name	3mk Fuego
Drivers	45mm + 30mm
Frequency response	70-20,000HZ
Impedance	4Ω ± 15%
Sensitivity	81dB ± 3dB
Max. Power	30W
Cable length	0.8m
Bluetooth version	5.3
Waterproof resistance	IPX7
Low latency in BT mode	<180ms
Music playtime	up to 12h
Bluetooth signal distance	10m
Charging time	3.5h
Standby time	up to 300 days
Battery capacity	5200mAh
Charging voltage	DC 5V
Weight	620g
Charging port	USB-C

## More information



www.3mk-global/fuego

# Fuego™

Let your music burn

3mk Protection sp. z o.o.  
Krotoszyńska 35, B-02/4a  
63-400 Ostrow Wielkopolski, Poland  
VAT ID PL 6222833086

Designed in Poland  
by 3mk Protection  
Made in China

